



# GAT MONTHLY MEMBERSHIP PROGRESS REPORT

Results as of: 4/30/2022

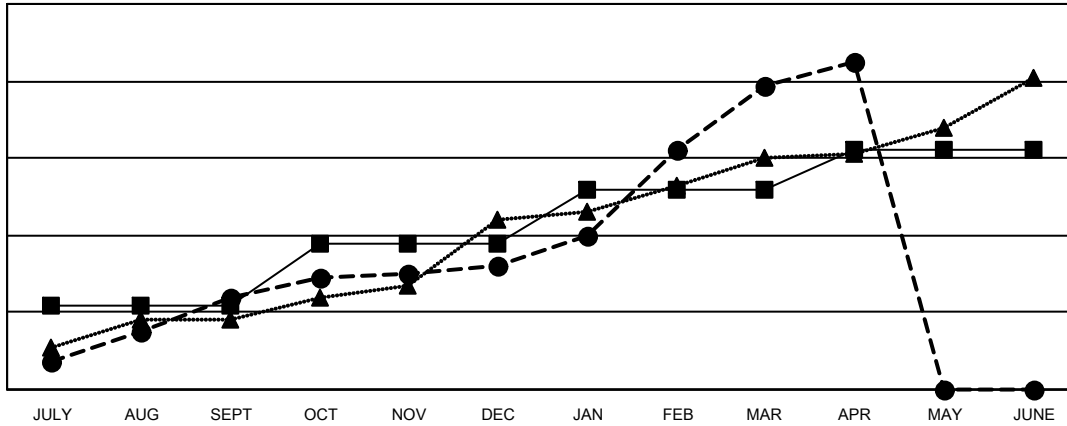
Multiple District 3233

LOCATION: INDIA

Clubs			
RESULTS FOR 2021-2022			
QUARTER	NEW CLUB GOAL	NEW CLUBS	DROPPED CLUBS
JULY/AUG/SEPT	22	24	44
OCT/NOV/DEC	16	8	47
JAN/FEB/MAR	14	47	8
APR/MAY/JUNE	10	6	1

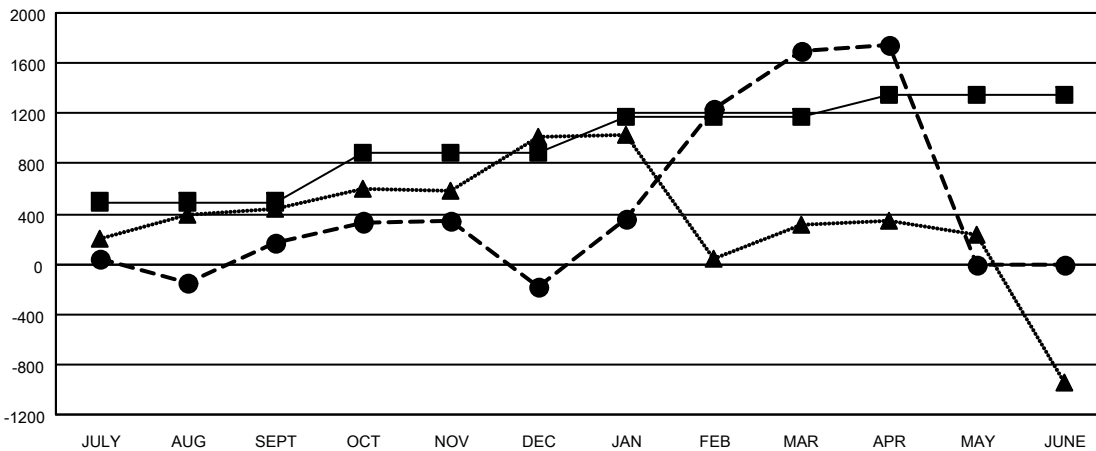
Members			
RESULTS FOR 2021-2022			
QUARTER	MEMBER GROWTH NET GOAL	MEMBER GROWTH ACTUAL	DROPPED MEMBERS ACTUAL (including transfers)
JULY/AUG/SEPT	495	1,208	952
OCT/NOV/DEC	395	988	1,260
JAN/FEB/MAR	280	2,459	352
APR/MAY/JUNE	180	259	179

GOALS AND ACTUAL NEW CLUBS CUMULATIVE



- - CURRENT YEAR GOALS FOR NEW CLUBS
- - CURRENT YEAR ACTUAL NEW CLUBS
- ▲ - LAST YEAR ACTUAL NEW CLUBS

GOALS AND ACTUAL MEMBERS CUMULATIVE



- - MEMBER GROWTH NET GOAL
- - MEMBER GROWTH ACTUAL
- ▲ - LAST YEAR MEMBERSHIP ACTUAL

DROPPED CLUBS: 99	
<b>DROPPED MEMBERS</b>	
DECEASED	44
CLUB CANCELLED	1,188
OTHER	1,511
<b>TOTAL</b>	<b>2,743</b>

431 CLUBS OF 923 ADDED 1 OR MORE NEW MEMBERS

[CLICK HERE FOR CUMULATIVE MEMBERSHIP DATA](#)

GENDER DISTRIBUTION	
MALE	14,434 (66.18%)
FEMALE	7,361 (33.75%)
NON BINARY	0 (0.00%)
PREFER NOT TO ANSWER	15 (0.07%)
<b>TOTAL FAMILY UNIT MEMBERS</b>	<b>10,052</b>
<b>FAMILY MEMBERS PAYING HALF DUES</b>	<b>5,760</b>